





Arts and Humanities constituency on Senate, be declared vacant due to their leaves and that Nandi Bhunia (English and Writing Studies) and Christine Sprengler (Visual Arts) be elected to take their seats until June 30, 2016.

CARRIED **ia**

Graduate



**REPORT OF THE SENATE COMMITTEE ON UNIVERSITY PLANNING** [Exhibit IV]

S.15-99

**Campus Master Plan**

*[M. McLean and J. Berridge were present to respond to questions as needed.]*

It was moved by B.A. Younker, seconded by J. Weese,

That Senate approve and recommend approval of the Campus Master Plan to the Board of Governors through the Vice-Chancellor.

Ms. Kulczycki,

**REPORT OF THE HONORARY DEGREES COMMITTEE** [Exhibit V]

S.15-101

**Spring Convocation 2015 – Honorary Degree Recipients**

*(Distributed via email prior to the meeting)*

Senate received for information the names of individuals who will be honoured by conferment of honorary degrees at the Hong Kong Convocation ceremony on May 31 and at Western's June 16 afternoon convocation ceremony, detailed in Exhibit V.

S.15-102

**REPORT OF THE ACADEMIC COLLEAGUE** [Exhibit VI]

The Report of the Academic Colleague, covering the April 2015 meeting, detailed in Exhibit VI, was received for information. Topics discussed included funding review, financial sustainability and demographic trends, part-time/sessional faculty, and OUAC's acquisition of a new Application [017]-24M

**ADJOURNMENT**

The meeting adjourned at 2:53 p.m.

---

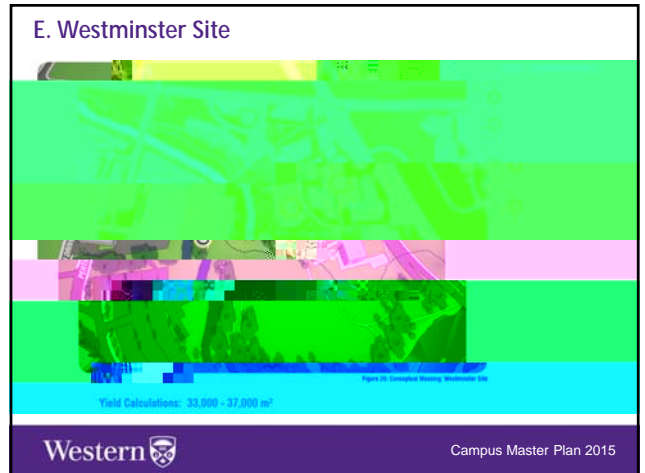
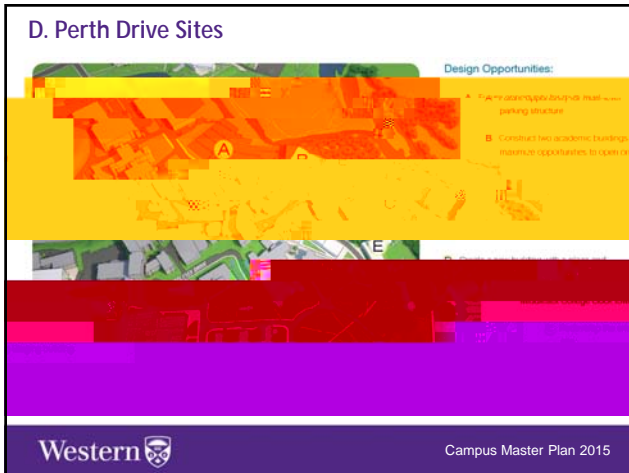
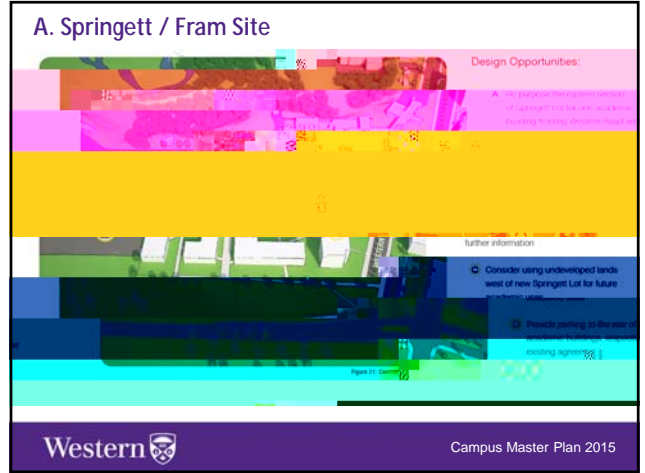
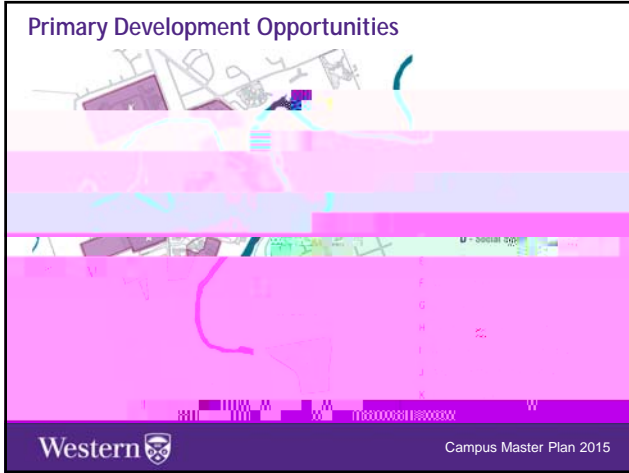
A. Chakma  
Chair

---

I. Birrell  
Secretary







### G. South Valley Site

Design Opportunities:

Western Campus Master Plan 2015

### Campus Core: Potential Academic Space

Potential New Academic Space on Main Campus: 78,000 - 359,000

The total amount of space required by the University is driven by enrolment as well as research and other specialist demands. Since the pressures on the University, both internal and external, for these kinds of activities are likely to increase, an addition of between 100,000 and 120,000 sq. m. per decade, is considered the best planning indicator of future growth.

Western Campus Master Plan 2015

### Public Realm: Priority Improvement Sites


Western Campus Master Plan 2015

### Western Road: Design Opportunities

Extend landscape improvements, signage

Western Campus Master Plan 2015


### Alumni Circle: Design Opportunities



Create a pedestrian oriented arrival commons that Drive and defines Alumni Circle as a key ent

Western Campus Master Plan 2015

### Oxford Drive: Design Opportunities



Western Campus Master Plan 2015

### Social Science Plaza: Design Opportunities



Conceptual rendering of Social Science Plaza


Create a distinctive arrival plaza and building addition that complements the design for Oxford Drive and provides a variety of interior and exterior spaces for studying, socializing, and informal lectures.

Western Campus Master Plan 2015

### Future Transportation Strategies

Suggested directions for transportation demand management:

- Accommodating parking
- Active transportation
- Rideshare/carpool
- Possible Rapid Transit development



Western Campus Master Plan 2015

## The Consultation Process

<b>Internal Stakeholder Consultations</b> PVP, Campus Council, Deans Council, SCUP, Property and Finance, SOGS, USC, Science Dean's Council (by invitation)
<b>External Stakeholder Consultations</b> City of London, Neighbourhood Associations, Alumni Board, LHSC, LTC, Affiliated University Colleges
<b>Campus Community</b> Mass Emails to Senators, students, faculty & staff, Western News article, Campus Community Meeting, Online Feedback

