



The UNIVERSITY of WESTERN ONTARIO

MINUTES OF THE MEETING OF SENATE

April 18, 2008

The meeting was held at 1:30 p.m. in Room 1R40, Richard Ivey School of Business.

SENATORS: 66

D. Abelson	A. Gajaria	L. Miller
M. Adamson	T. Garrard	M. Naish
M.A. Andrusyszyn	C. Gibson	K. Okruhlik
Z. Armstrong	R. Hall	J. O'Sullivan
A. Awaysheh	R. Harris	R. Rajakumar
A. Barnfield	E. Heersink	A. Sauer
J. Barron	M. Johnson	S. Sims
A. Beach	C. Keep	D. Spencer
C. Beynon	R. Keirstead	T. Timney
M. Broadfoot	G. Knopf	T. Topic
T. Carmichael	B. Kraatz	J. Toswell
J. Corrigan	G. Kulczycki	M. Usselman
C. Crinklaw	R. Kulperger	M. van Gaalen
K. Danylchuk	S. Lecce	D. Wardlaw
P. Davenport	W. Lehmann	A. Weedon
P. Doyle	S. Lofts	J. Weese
N. Dyer-Witthford	F. Longstaffe	A. Willson
N. Ecclestone	B. MacLachlan	B. Wood
C. Ellis	R. Macmillan	P. Woodford
H. El Naggar	P. Mahon	P. Yu
J. Etherington	L. McKechnie	T. Yurkewich
T. Fulton	M. Milde	S. Zborovski

Observers: R. Chelladurai, J. Doerksen, A. Gopal, D. Jameson, T. Stevenson, G. Tigert

S.08-70 **MINUTES OF THE PREVIOUS MEETING**

The minutes of the meeting of March 14, 2008 were approved as circulated.

S.08-71 **REPORT OF THE PRESIDENT**

OPERATIONS/AGENDA COMMITTEE [Exhibit I]

S.08-72 **Senate Membership: Faculty Constituencies**

It was moved by T. Carmichael, seconded by H. El Naggar,

That Ashraf El Damatty, elected representative to Senate for the Faculty of Engineering constituency, be granted a leave of absence from Senate, and,

That Michael Naish (Mechanical & Materials Engineering) be elected to serve as his alternate (term to June 30, 2008)

That the following nominees be appointed to Senate to represent the constituencies shown for terms from July 1, 2008 to June 30, 2010:

- Representing the Faculty of Engineering: Michael Naish (Mechanical & Materials Engineering)
- Representing the Faculty of Information and Media Studies: Sasha Torres

CARRIED

S.08-73 **Nominating Committee Membership**

The following were elected as Members to the Senate Nominating Committee: M. Broadfoot, K. Danylchuk, B. Macmillan (terms July 1, 2008 to June 30, 2010), and L. McKechnie (term July 1, 2008 to June 30, 2009).

The following were elected as Alternates to the Senate Nominating Committee: C. Busch (term July 1, 2008 to June 30, 2009 and C. Keep (term July 1, 2008 to June 30, 2010).

UNIVERSITY PLANNING [Exhibit II]

S.08-74 **Arthur Labatt Family School of Nursing**

budget recommendations, a summary of the operating budget and the cap

S.08-78 **Senate Committee on Academic Policy and Awards (SCAPA)**

The following were elected to the Senate Committee on Academic Policy and Awards: G. Snyder (term July 1, 2008 to June 30, 2009), M. Cheesman, M. Milde, and B. Timney (terms from July 1, 2008 to June 30, 2010).

S.08-79 **Senate Committee on University Planning (SCUP)**

C. Dunbar and M. Steele were elected to serve on SCUP for two-year terms from July 1, 2008 to to June 30, 2010.

S.08-80 **University Council on Animal Care (UCAC)**

C. Ellis and E. Hurley were elected to serve on the University Council on Animal Care for terms from July 1, 2008 to June 30, 2010.

S.08-81 **Honorary Degrees Committee**

M. Reid (term July 1, 2008 to June 30, 2009), D. Abelson, A. Leschied, D. Semotiuk, and M. Steele (terms July 1, 2008 to June 30, 2010) were elected to serve on the Honorary Degrees Committee.

S.08-82 **Senate Review Board Academic (SRBA)**

The following were elected to serve on SRBA:

Chair: P. Allen (term from July 1, 2008 to June 30, 2009).

Faculty: K. Luton, C. Nolan, C. Orchard, M. Randall, J. Stokes, M. Workentin (terms July 1, 2008 to June 30, 2010)

Undergraduate Students: N. Caldwell, N. Fassina, E. Heersink, M. Hyland, M. Tithecott and G. Zini (terms from July 1, 2008 to June 30, 2009)

S.08-83 **Distinguished University Professors Selection Committee**

R. Darnell and B. Fisher were elected to serve on the Distinguished University Professor Selection Committee for terms from July 1, 2008 to June 30, 2010.

S.08-84 **Faculty Scholars Selection Committee**

M. Cottam and M. Randall were elected to serve on the Faculty Scholars Selection Committee for terms from July 1, 2008 to June 30, 2010 .

S.08-85 **Nominating Subcommittee to Nominate a Senator from the General Community**

K. Danlychuk and I. Holloway were elected to the Nominating Subcommittee to Nominate a Senator from the General Community for terms from July 1, 2008 to June 30, 2010.

S.08-86 **Academic Colleague**

R. Lipson was elected to serve as the Academic Colleague (term July 1, 2008 to June 30, 2010).

S.08-87 **Advisory Committee for the Ombudsperson**

S. Pepper was elected to serve on the Advisory Committee for the Ombudsperson (term from May 1, 2008 - April 30, 2010).

S.08-88 **McIntosh Gallery Committee**

C. Wilkins was elected to serve on the McIntosh Gallery Committee (term June 2008 to June 2010).

S.08-89 **Faculty of Health Sciences School of Kinesiology Advisory Committee on Sports and Recreation Services**

A. Johnson was elected to serve on the Advisory Committee on Sports and Recreation Services (term to June 30, 2010).

ACADEMIC POLICY AND AWARDS [Exhibit IV]

S.08-90 **Faculty of Law: Revisions to Admission Requirements under General and Discretionary Categories**

It was moved by M. Milde, seconded by T. Fulton,

That effective for the 2009 admissions cycle, the calendar description for Admission Requirements under “General Category” and “Discretionary Categories”, detailed in Exhibit IV, item 1, be revised for the Faculty of Law.

CARRIED

S.08-91 **Progression Requirements for Nursing Programs**

It was moved by M. Milde, seconded by M.A. Andrusyszyn,

That Senate approve that the progression policy for undergraduate nursing programs be revised as outlined in Exhibit IV, item 2, effective September 1, 2008.

CARRIED

S.08-92 **Policy on Module Requirements**

It was moved by M. Milde, seconded by L. McKechnie,

That Senate approve a revision to the Module Requirements section of the Graduation Requirements for Honors Bachelor Degrees, Bachelor Degrees (Four-Year) and Bachelor Degrees (Three-Year), detailed in Exhibit IV, item 3.

CARRIED

S.08-93 **Revised Articulation Agreement between Fanshawe College (Science Laboratory Technology and Environmental Technology Programs) and The University of Western Ontario (Environmental Science and Chemistry Modules)**

It was moved by M. Milde, seconded by M. Van Gaalen,

That effective May 1, 2008, the Articulation Agreement between Fanshawe College (Science Laboratory Technology and Environmental Technology Programs) and The University of Western Ontario (Environmental Science and Chemistry Modules), detailed in Exhibit IV, Appendix 1, be revised.

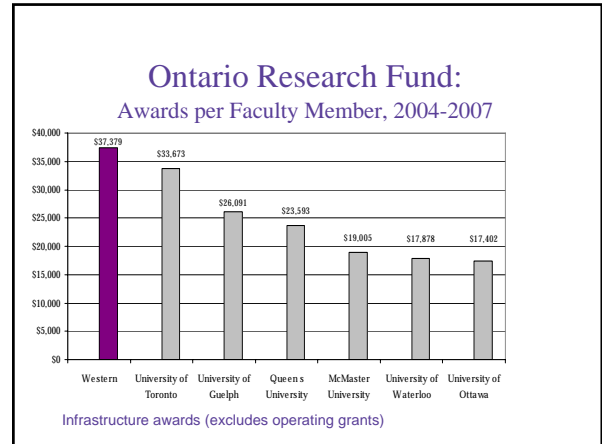
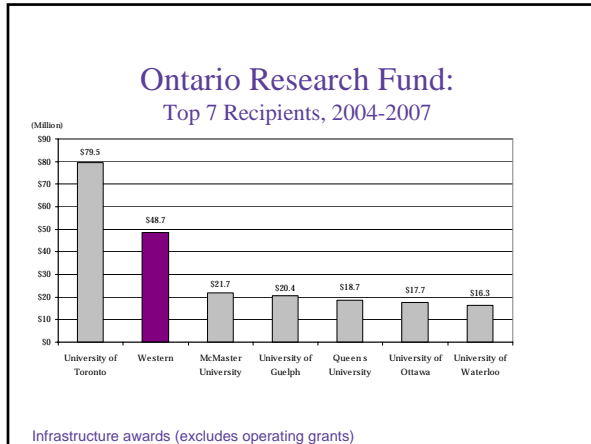
CARRIED

S.08-94

New Scholarships, Awards and Bursaries

SCAPA has approved on behalf of the Senate the terms of reference for the following new scholarships and awards, for recommendation to the Board of Governors through the President & Vice-Chancellor:

Arthur Labatt Family Graduate Scholarship in Nursing (Graduate Studies, Nursing)
Arthur Labatt Family Undergraduate Scholarships in Nursing (Faculty of Health Sciences, Nursing)
Arthur Labatt Family Scholarship in Pediatric Nursing (Faculty of Health Sciences, Nursing)
Archie E. Cunningham Memorial Continuing Entrance Awards (Don Wright Faculty of Music)
Amy and Elliott Grieve Undergraduate Award in English (Faculty of Arts and Humanities, English)
Society of Industrial and Office Realtors Scholarship (Faculty of Social Science, Geography)
Society of Industrial and Office Realtors Urban Development Scholarship (Faculty of Social Science, Geography)
The Meds Class of 1950 OSOTF II/OTSS Bursary (Schulich School of Medicine & Dentistry, MD)
Dr. Keith Fleming/CMA Student Award (Faculty of Social Science, BMOS)
Colt WorleyParsons Corporate Award (Faculty of Engineering)
Michael J. Troughton Graduate Student Bursary (Graduate Studies, Geography)
Alfred Edward Hathaway Petrie Scholarship (Faculty of Arts and Humanities)
ESRI Canada Limited Graduate Student



The University of Western Ontario

**2008-09 Operating and
Capital Budgets**

Senate
April 18, 2008

Planning and Budgetary Context

Context for Operating Revenues

5-Year Provincial Investment as part of May
2005 Budget -- 2005-06 to 2009-10

Undergraduate Enrolment Growth Funding

Targetted Program Expansion Funding

Unfunded BIUs

Tuition Freeze Compensation

Quality

Graduate Expansion

Most components "Front-end Loaded"

Context for Operating Revenues

4-Year Government Framework on Tuition

2006-07 to 2009-10

4.5% / 4% for Regulated Undergrad Programs

8.0% / 4% for Deregulated Undergrad as well as
Graduate Programs

Revenue Forecasts at Western for Next 3 Years

Provincial Government Grants

Major portion of the Province's New Investment
has reached Steady-State

Two Growing Components

Graduate Expansion Funding

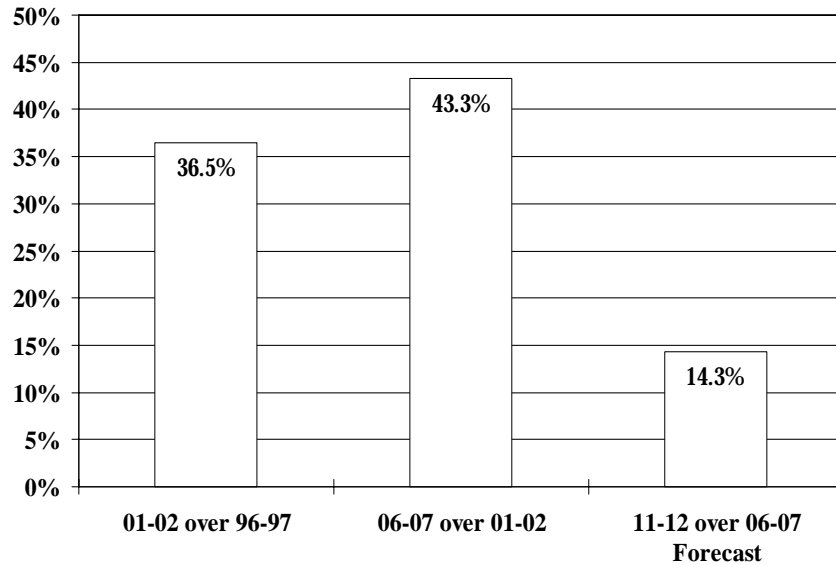
Contingent on achieving government allocations

Allocations beyond 2008-09 not yet finalized

Quality Funding

Based on overall enrolment levels

Operating Revenues: % Change over 5-Yr Periods



Operating Expenditure Commitments

Funding to Faculties for Enrolment Growth
ECF, GEF, GEF+
Student Support -- Undergrad and Graduate
Utilities -- including New Buildings
Operating Costs of New Buildings
Library Acquisitions
MMI Transfer
Information Technology Systems

Western's Response to the *Reaching Higher* Revenues

Western's Response to *Reaching Higher*

Western responded with Immediate Direct Investments in our Faculties and Support Units

In-Year in August 2005 -- \$2.1M Base and \$3.6M One-time

12 faculty appointments, 15 staff positions, equipment, IT infrastructure, grad student space

In 2006-07 Budget -- \$8.4M Base

40 faculty appointments and 38 staff positions

Western's Response to *Reaching Higher*

In-Year in August 2006 -- \$1.3M Base to the Faculties

14 faculty appointments

Commitments in 2007-08 Budget -- \$9M Base and \$13.5M PASF/One-time

23 faculty appointments, 11 staff positions, teaching equipment, facilities enhancements

The Next 3 Years at Western Context

Stable Undergraduate Enrolment

Graduate Expansion

Major source of incremental government funding

Modest Additional Tuition Revenue

About 4% per year

Uncertainties regarding Investment Income

The Next 3 Years at Western Priorities and New Initiatives

Graduate Expansion

Doubling of PhD Enrolments

Substantial Increase in Masters Enrolments

Next Stages of our Long-Range Space Plan

ICFAR, Talbot Theatre

Possible Ivey School Building

“Follow-on” Projects

Increasing Diversity in the Professoriate

Recruitment of Members from First Nations Community

Signature Areas

Allocations to Faculties and Support Units

Continue with Commitments made last year in
Round 1 -- over the 4 Years

Base UPIF -- \$5.9M for the Faculties (Table 2) and
\$3.1M for Support Units (Table 6)

PASF/One-Time -- \$9.7M for the Faculties
(Tables 4&5) and \$3.4M for Support Units (Table 7)

Additional Resources in this Round 2 – over the
remaining 3 Years

Base UPIF -- \$1.0M for the Faculties (Table 2) and
\$1.0M for Support Units (Table 6)

PASF/One-Time -- \$1.9M for the Faculties
(Tables 4&5) and \$2.2M for Support Units (Table 7)

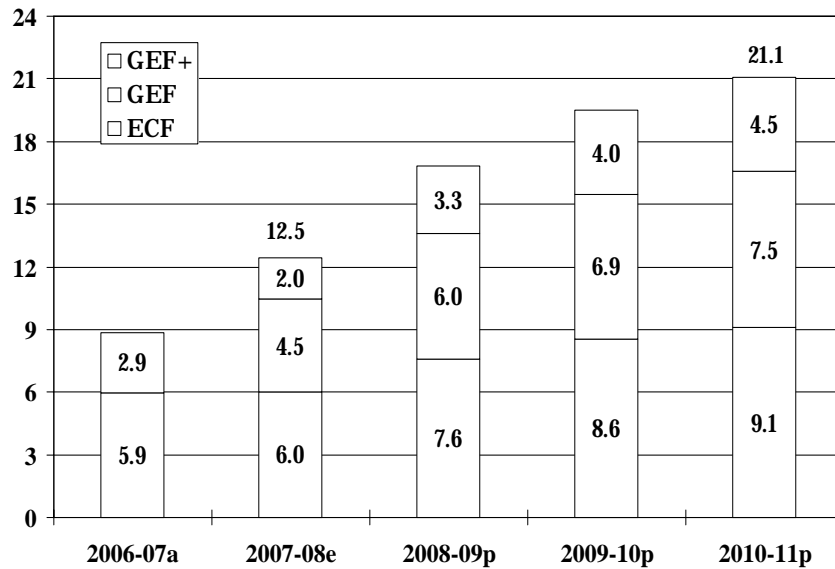
Round 1 + 2 Allocations in Support of *Engaging the Future*

	UPIF (Base)	PASF/One-Time
Enhancing the Undergraduate Student Experience	171,000	2,752,537
Graduate Expansion & the Graduate Student Experience	2,248,000	3,800,687
Building the Research-Intensive University	345,000	2,636,677
Internationalization	176,000	275,000
Faculty Recruitment and Retention	3,730,000	1,108,000
Commitment to Staff and a Supportive Workplace	251,000	472,000
Sub-Total Strategic Plan Priorities	6,921,000	11,044,901
Allocations for Basic Operations	4,120,000	6,099,195
Total Round 1 + Round 2 Allocations	11,041,000	17,144,096

Additional Resource Allocations to the Faculties

ECF, GEF, GEF+ will provide substantial
additional resources to the Faculties

ECF/GEF/GEF+



2008-09 Operating Budget

New Features Being Introduced in the 2008-09 Budget

Incorporation of Robarts

Revenues and Expenditures

Privately-funded Needs-based Student Aid

Allows us to give a Complete Picture of Student
Financial Aid

Consolidation of IT Systems/Infrastructure
Expenditures -- in the "IT Infrastructure Fund"

2008-09 Operating Revenues (Table 8)

Government Grants -- \$252.8M

Growth expected in Graduate Expansion Funding
and Program Expansion Grants

Tuition Fees -- \$190.3M

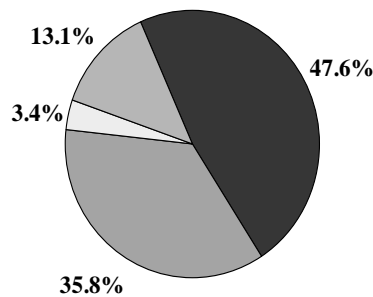
Overall increase of 4.3%

Other Revenues -- \$87.8M

Special One-time Draw from Investment Income
5 Additional CRCs

Growth in Research Overhead, Royalties &
Licences, and Contributions from Self-funded Units

Distribution of 2008-09 Operating Revenues (\$531M)



■ Govt Grants ■ Tuition □ SFO/Ancill ■ All Other

2008-09 Operating Expenditures

Expenditures are Grouped into the Following Categories

Base Allocations to Faculties (Table 9)

Student Aid -- Scholarships & Bursaries (Table 10)

Base Allocations to Support Units (Table 11)

Corporate or University-wide Expenditures (Table 12)

One-time Allocations (Table 13)

Base Allocations to Faculties (Table 9)

Starts with Initial Budget Adjustment

Faculty Turnover Recovery Applied

UPIF Allocations

Other Budget Changes

Tuition-based Investment, Program Expansion Funds

ECF to Base Conversions

CRCs

ECF, GEF, GEF+

Overall Base Increase of \$2.9M

Student Aid (Table 10)

Western's Commitment

***no qualified student will be unable to attend
Western or be required to withdraw for lack of
access to adequate financial resources***

Total of \$48.3M in 2008-09 (+2.7M)

\$5.9M in Undergrad Scholarships (+102K)

\$20.7M in Undergrad Needs-based Support (+272K)

\$21.7M in Graduate Student Support (+\$2.3M)

Total \$48.3M includes \$5.1M in Privately-Funded
Needs-based Aid

Endowments, OTSS/Matching, Expendable Donations

Allocations to Support Units (Table 11)

Starts with Initial Budget Adjustment

UPIF Allocations

Other Budget Changes

Transfer to IT Infrastructure Fund from ITS

Operating Costs of New Facilities to PPD

Fundraising Levy Offset Funding to Development

Overall Change is a Base Reduction of \$250K

Excluding ITS Transfer, an Increase of \$520K

Support Units receive \$1.5M in One-time Funding
in 2008-09 (Table 7)

Other Budget Allocations

Base Corporate Expenditures (Table 12)

Utilities	\$16.3M
Library Acquisitions	\$12.9M
MMI	\$10.3M
University IT Systems	\$ 4.7M
Insurance	\$ 1.5M
Athletics	\$ 0.6M

Other Budget Allocations

Major One-Time Allocations (Table 13)

\$6.0M for CFI Matching

\$14.2M to Capital

For Long-Range Space Plan, Support Services Bldg
Furniture, Upgrade Chemistry Lab

Flowthrough of \$6.7M of Robarts Revenues

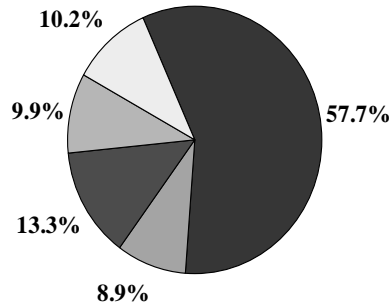
\$5.3M in Targetted Government Funding to Medicine
& Dentistry

\$2.1M in Incremental Robarts Transition Costs

\$750K for Equipment in the New Rec Centre

\$660K in Support of Graduate Student Recruitment
Initiatives and the 360 Degree Initiative

Distribution of 2008-09 Operating Expenditures (\$541.4M)



■ Faculties ■ Schol/Burs ■ Support Units ■ Corporate Exp □ All Other

Summary of 2008-09 Operating Budget (Table 14)

2008-09 Revenues = \$531.0M

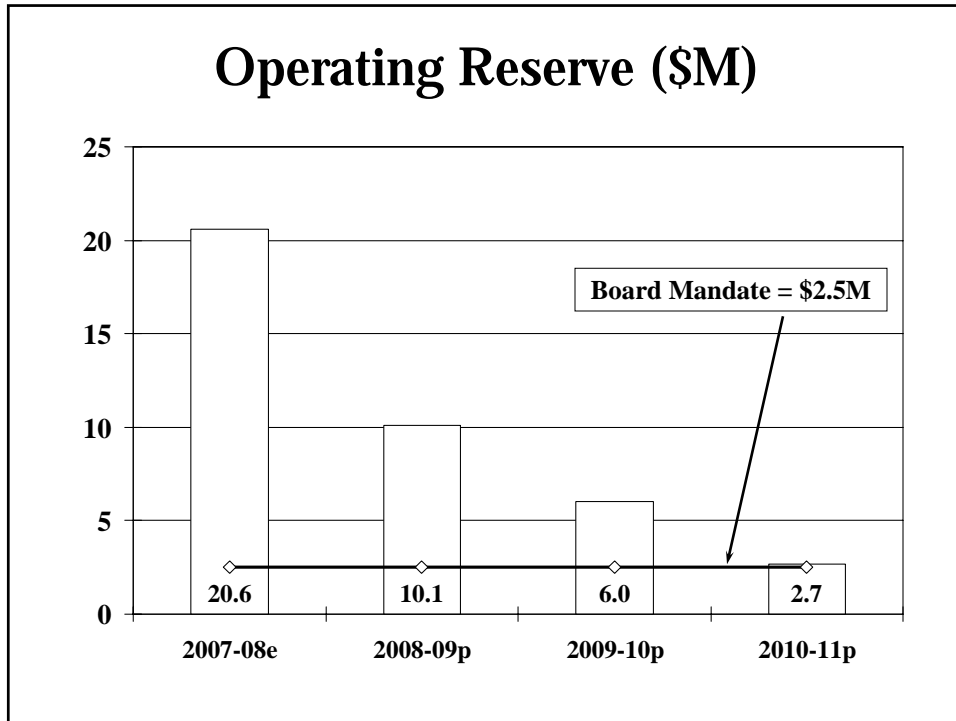
2008-09 Expenditures = \$541.4M

2008-09 Operating Reserve Forecast to be \$10.1M

To be used for Expenditures in Years 3 and 4 of Multi-Year Plan

At the end of the 4-Year Plan, the Reserve is Forecast to be \$2.7M

Compared to Board Mandate of \$2.5M



Future Issues

Future Issues

After preparation of this University Budget, the Provincial Government's Budget announced additional One-Time Operating and Capital Funding to Ontario's Universities

We are seeking Board approval to carry out an in-year process during the Summer of 2008 for the allocation of any additional Govt Funds

Estimated to be about \$4.5M Operating and \$18M Capital for Facilities Renewal

Capital Budget

Overview of 2008-09 Capital Budget

Supports Long-Range Space Plan

Total Spending of \$122.6M (Table 22)

\$61.7M for New Construction (Table 25)

Student Services Building

Lassonde Pavilion (Green Building)

Student Recreation Centre

Support Services Building

Advanced Facility for Avian Research (AFAR)

Material Sciences Addition

Institute for Chemicals and Fuels from Alternative Resources (ICFAR)

Overview of 2008-09 Capital Budget

\$36.3M for Major Renovations (Table 25)

Follow-on Renovations in Existing Buildings

Social Sciences Centre, Alumni Hall, SLB, Natural Sciences Centre

Biological & Geological Sciences Building

Physics & Astronomy Building

Talbot Theatre

Robarts Cuddy Wing Renovations

IT Network and Infrastructure Upgrades

Overview of 2008-09 Capital Budget

\$24.6M for All Other Projects (Tables 26 to 28)

Utilities and Infrastructure

Modernization of Instructional/Research Facilities

General Maintenance and Modernization

Ancillary Projects

Overview of 2008-09 Capital Budget

Major Sources of Funding (Table 24)

Special One-time Provincial Grants for ICFAR, Physics & Astronomy, and General Facilities Renewal

MTCU Annual Facilities Renewal Grant

MTCU Graduate Expansion Capital Grant

City of London

Operating Budget: Annual MMI (\$10.25M) and One-Time (\$14.2M)

Operating Budget: FFICR & CRC Transfers

Fundraising, Borrowing, Unit Budgets -- including Ancillaries

Long-Term Financial Trends

Long-Term Financial Trends

New Component in this 2008-09 Budget Document

A Review of the University's Long-Term Obligations

Capital Debt

Employee Future Benefits

Deferred Maintenance

Capital Debt

Western's Capital Debt is managed within
the Board Policy

Debt per FTE Student is capped

Employee Future Benefits

Associated with Medical, Dental, and Life Insurance Benefits to Eligible Employees after Employment at Western Ends

At April 30/2007, Western's Accrued Employee Future Benefit Liability was \$188M

Grew by \$15M over the Previous Year

Deferred Maintenance (DM)

Work on the Maintenance of Physical Facilities that has been Deferred -- for Financial Reasons

It is estimated that -- assuming 50 years as the life of University Buildings -- we should spend about 2% of the Replacement Value of our Buildings on DM each year

Deferred Maintenance

Western continues to Increase the Transfer from the Operating Budget by \$750K each year -- \$10.25M in 2008-09

This \$10.25M is only 0.78% of the Current Replacement Value of our Buildings

In recent years, One-Time Funding from the Province has allowed us to be near the 2% DM Spending Standard

We continue to urge the Province to convert the “One-Time” to “Base”