

THE UNIVERSITY OF WESTERN ONTARIO

SCHOOL OF HEALTH STUDIES

HEALTH SCIENCES 3071A: DETERMINANTS OF HEALTH AND DISEASE

FALL 2022

Instructor: Dr. Carla Filomena Silva

Office: Arthur and Sonia Labatt Health Sciences Building (HSB), Room 345

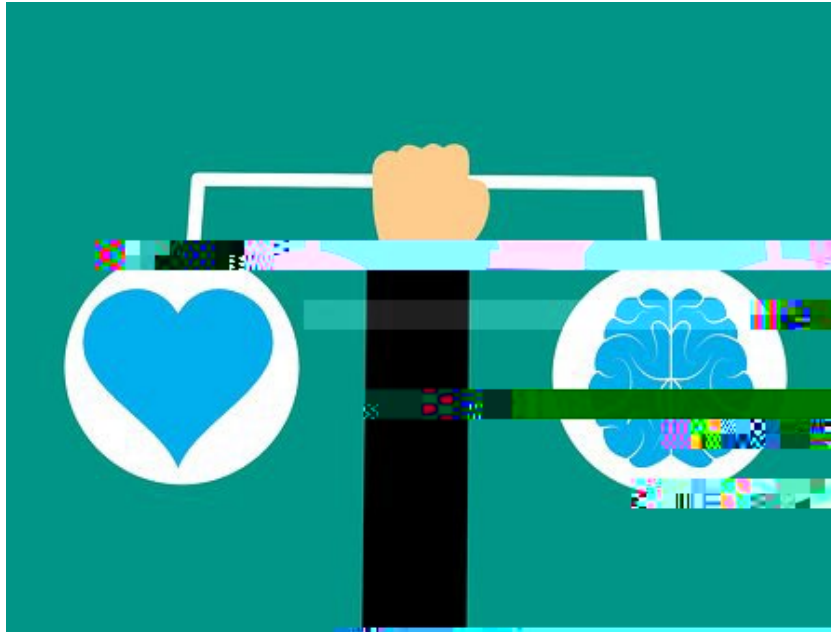
Email: csilva42@uwo.ca (please use private chat on MSTeams to contact me rather than email)

Office Hours: Tuesday: 12.20- 1.10 (use OWL sign-up tool to book a 10- min. slot)

Course Format: In-Person

Date/Time: Tuesdays 9.30- 12.30 FNB 2240

Teaching Assistant: TBD



DIVERSITY STATEMENT:

In the Faculty of Health Sciences at Western University, an important part of our mission is to nurture the creativity, curiosity, and critical thinking of tomorrow's global leaders through education and knowledge mobilization. To achieve this, we commit to creating and fostering an inclusive and equitable learning environment for all students in our diverse student body. We acknowledge we are all individuals with intersecting sociocultural identities that influence our worldview through lenses of relative privilege and oppression, and we encourage all our instructors to practice reflexivity when designing and revising course materials in order to ensure adequate representation of traditionally excluded voices and philosophies in university curricula. We are committed to the decolonization and Indigenization of our course materials, and we invite our students to become active participants in this endeavor through open dialogue. As a student, please connect with your course instructor or teaching assistant, if you have any concerns about course materials and/or the learning environment.

LAND ACKNOWLEDGMENT

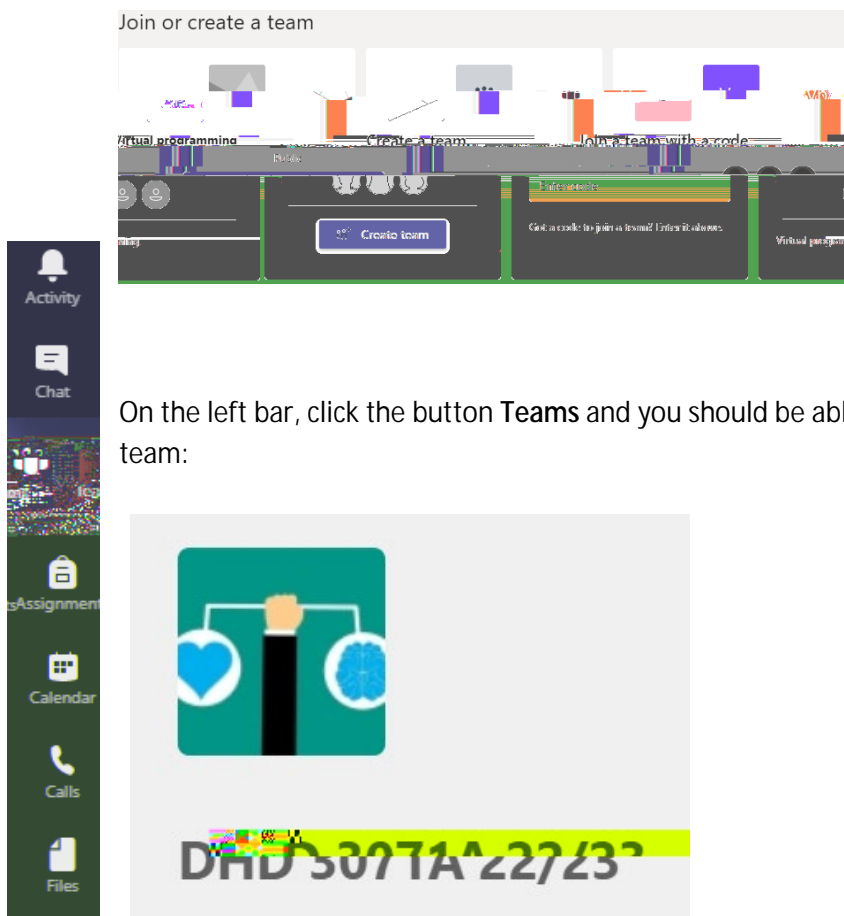
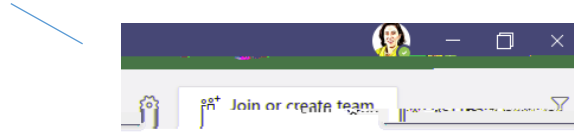
Manchanda, R. (2013). *The Upstream Doctors: Medical innovators track sickness to its source*. New York: TED Conferences. (available as an ebook on Kindle)

Ar.cK. N Mes6 7g(es6 7o (D)-7.t (o)97.t 6)97.h (.)-2T(N)(c).7 ()10.[(e)-3.Ee55 1

- Design and regulate your own learning journey.

YOUR CLASSROOM

Your virtual classroom space is located in MSTeams. If you do not have the software on your desktop, download it from [here](#). Once installed, open Teams, select *join or create team* at the top right, and input the code **ndnxcwc** in the box *join a team with code*.



On the left bar, click the button **Teams** and you should be able to see the box for your Course team:

Course tools and materials:

Software: We will be using OWL and MS Teams as the main digital tools. If other software is used, you will be instructed on how to use it in a timely fashion.

Tentative course schedule:

The following table offers a provisional thematic/ activity map for our weekly teaching and learning units. Note that this plan will be updated weekly with more detailed information and may change.

Be aware that effective engagement in the course requires between **6 - 8 hours weekly** (including your own st

<p>4 3- 7 OCT</p>	<p>Intellectual Empathy Skills One and Two: Understanding the Invisibility of Privilege Applying an intersectional lens</p>	<p>Lesson activities Live in-person session Office hours Test 1 (4th OCT, Up to Lesson 3)</p>	<p><i>Scarborough</i> Linker, 2015, selected excerpts Other Resources on OWL</p>
<p>5 10- 14 OCT</p>	<p>Learning to live healthy: education, class, and life chances. Skill three of Intellectual Empathy: Using the model of cooperative reasoning</p>	<p>Lesson activities Live in-person session Office hours 11 OCT: INTELLECTUAL EMPATHY LAB 1 (Tin</p>	

	Skill Five of Intellectual Empathy: Recognizing Our Mutual Vulnerability	11 NOV: INTELLECTUAL EMPATHY LAB 3 (TEAMS 7,8,9)	
9 14- 18 NOV	Other -isms: Ageism, Ableism, Health Equity and Health Care	Lesson activities Live in-person session Office hours 18 NOV: INTELLECTUAL EMPATHY LAB 4 (TEAMS 10,11,12) TEST 3: 18 NOV (up to lesson 8)	<i>Scarborough</i> <i>Several selected readings and other resources to be shared on OWL</i>
10 22- 26 NOV	Other -isms: Sexism, Heterosexism, Homophobia, Health Equity and Health Care	Lesson activities Live in-person session Office hours INTELLECTUAL EMPATHY LAB 5 (TEAMS 13,14,15)	Raphael, 2016, selected chapters <i>Scarborough</i> <i>Several selected readings and other resources to be shared on OWL</i>
11 28 - 2 DEC	Developing the final assignments. Class tutorial and peer-feedback. <i>2nd December: Deadline for the final assignment submission</i>		
12 7 DEC	<i>Health Equity Conference</i> Meili, 2018, chapter 11 So what? Will our knowledge and intellectual empathy skills make any difference? What can we do? What will we do to advance Health Equity? Live in-person session: Final plenary		

Evaluation:

Methods of Assessment	When?	% / points
1. Participation/ Engagement (Individual)		

class test

Participation: Participation in this course implies active engagement with the proposed lesson tasks, including (for example) participation in online tasks, contribution to small and large group discussions and intellectual empathy labs. The specific expectations for each unit will be communicated weekly.

Communication: To communicate privately with the teaching team, use the

If you are in emotional or mental distress should refer to Mental Health@Western