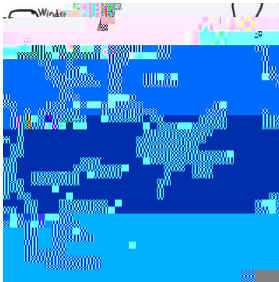


ALICE MUNRO AND OTHER LOCAL GENIUSES



Fiction is all bound up in the local. The internal reason for that is surely that feelings are bound up in place. [...] The truth is, fiction depends for its life on place. Location is the crossroads of circumstance, the proving ground of 'What happened? Who's here? Who's coming?' – and that is the heart's field.

- Eudora Welty

As critics have often observed, Alice Munro's "heart's field" is

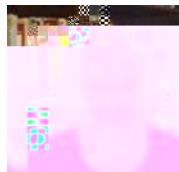
...¹ for their fiction, poetry and drama.

The class will meet on campus and in a variety of local off-campus locations on field trip days, and will incorporate guest speakers on a variety of topics, cultivating connections with local cultural communities and institutions. The course will develop critical, creative, and experiential engagements with literature and culture through learning assignments tailored to the interests of individual students. Note: this course includes a community-engaged learning component.

This course argues is that there is value in interacting with with local places and people – in effect, that creativity begins *here*, and that knowledge is generated and transformed in such interactions.

¹ "Souwesto" [a term originated by Greg Curnoe] designates one of English Canada's most thickly populated countries of the mind and refers to Southwestern Ontario, which covers the peninsula created by Lake Erie, Lake Huron and Georgian Bay." Duffy, Dennis. "Present at the creation: John Richardson and 'Souwesto.'" *Journal of Canadian Studies/Revue d'Etudes canadiennes* (28:3) Fall 1993, 75-91. Online.

Wednesdays 6-9 pm Location: Talbot College 343 *unless otherwise indicated on schedule*



PROFESSOR MANINA JONES

Arts and Humanities Building 3G18 (see the "How to Find Professor Jones" slideshow in OWL)

Office Hours: Thursdays 11:30-12:30 and 1:30-3:30 pm

mjones@uwo.ca

(Note: books you should purchase are marked with *, selections from other texts will be made available by photocopy or on OWL)

Alexis, André. Selections from *Lambton, Kent*. Toronto: Gutter Press, 1999.

Barrett, Adrienne. Selections from *The House is Still Standing*. Fredericton, NB: icehouse poetry, 2013.

Bowering, George. Selections from *The Moustache: Memories of Greg Curay, Cuñand*

. London: Brick, 1995.

Dewdney, Christopher. Selections from *A Palaeozoic Geology of London, Ontario*. Toronto: Coach House, 1974.

Hassan, Jamelie. Selections from *Trespassers and Captives*. London, ON: LRAHM, 2000.

*

Keep track of due dates. Details of assignments will be posted in OWL. As described in the course description, the essay assignment will be tailored to the individual interests of students. We will use the OWL Wiki function to post possible topics, which you will refine and develop in discussion with Professor Jones. Unless you're informed otherwise, assignments should be submitted in electronic form, through OWL. They will also be returned through OWL.

Submit your papers on time. Papers submitted after the due date without prior permission will be deducted 2% per day late, *including* weekends. Papers handed in after the assignment has been returned to other students will not normally be accepted. See the Department of English web page for information on _____.

All students are expected to practice intellectual honesty and act with integrity. This means that you must conscientiously document your research and debts to others, that you must be accountable for your own work in all aspects of the course, and that you must conduct yourself in a respectful way in relation to your peers, faculty and staff. It is your responsibility to be informed about these standards: don't be afraid to ask questions!

All required papers must be submitted for textual similarity review to the commercial plagiarism detection software under license to the University for the detection of plagiarism. All papers submitted will be included as source documents in the reference database for the purpose of detecting plagiarism of papers subsequently submitted to the system. Use of the service is subject to the licensing agreement, currently between The University of Western Ontario and Turnitin.com. Also, see the Department of English web page for information on _____.

All students must enrol in and complete this unit in order to pass this course.

The English Department web site has essential



Be respectful. Treat other students and all our community partners with respect.

If you have material on any electronic device that is distracting to you or those around you, you will be asked to leave the class. This is especially important when we are meeting off-campus.

Calculate assignments promptly. Be sure you note due dates, and read instructions carefully.

BASIC LEARNING GOALS...

<i>Date</i>	<i>Reading or Topic and Class Location</i>
Sept. 10	